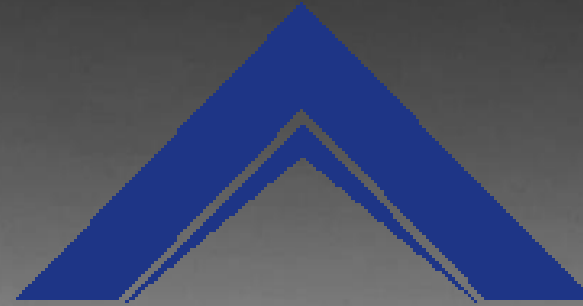


“LET'S MAKE A TEAM. THE POWER OF SYNERGY”.



GRUPO

CODAPSA

www.codapsa.com

We are a construction company specializing in high-value buildings and infrastructure.

- Earth movements and rental of heavy machinery.
- Civil works, reinforced concrete and foundations.
- Metallic Structures and cladding of structures (laterals in walls and roofs).
- Road infrastructure (civil works of land roads, bridges and highways).
- Complex and vertical buildings.



Let's establish business relationship.

We present our portfolio to you, hoping you will
choose us as your general contractor.



GRUPO
CODAPSA

With 32 years of experience, originally from San Luis Potosí, focused on high-value construction, in the residential, commercial and industrial sectors, including infrastructure works.

We are committed to the profitability of your project and investment, job security and the environment in the Bajío and the entire Mexican Republic.

We have the Registry of Specialized Service Providers or Specialized Works (**REPSE**).



ETHICS

COMMITMENT



LOYALTY

INTEGRITY

QUALITY

SOCIAL AND ENVIRONMENTAL RESPONSIBILITY

ETHICAL VALUES

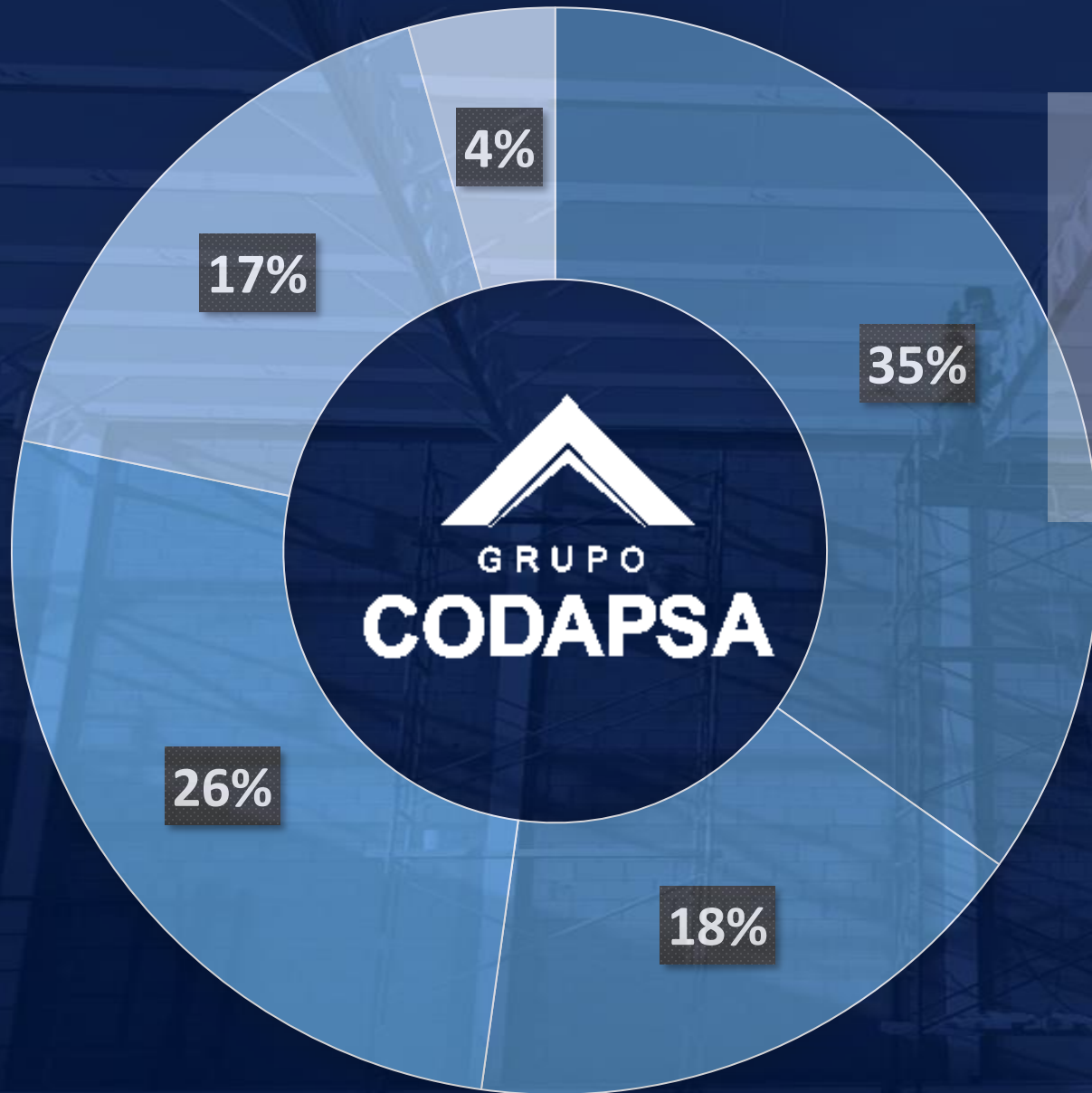
MISION.

Execute **unique and innovative** construction projects and/or services that are distinguished by their high levels of **efficiency, effectiveness and quality**. Always ensuring to meet the needs of our customers, **ensuring their investment and generating measurable value**.

VISION.

To be a highly competitive company at an **international level**, solving its projects efficiently with **quality, responsibility and honesty**.

Own execution capacity.

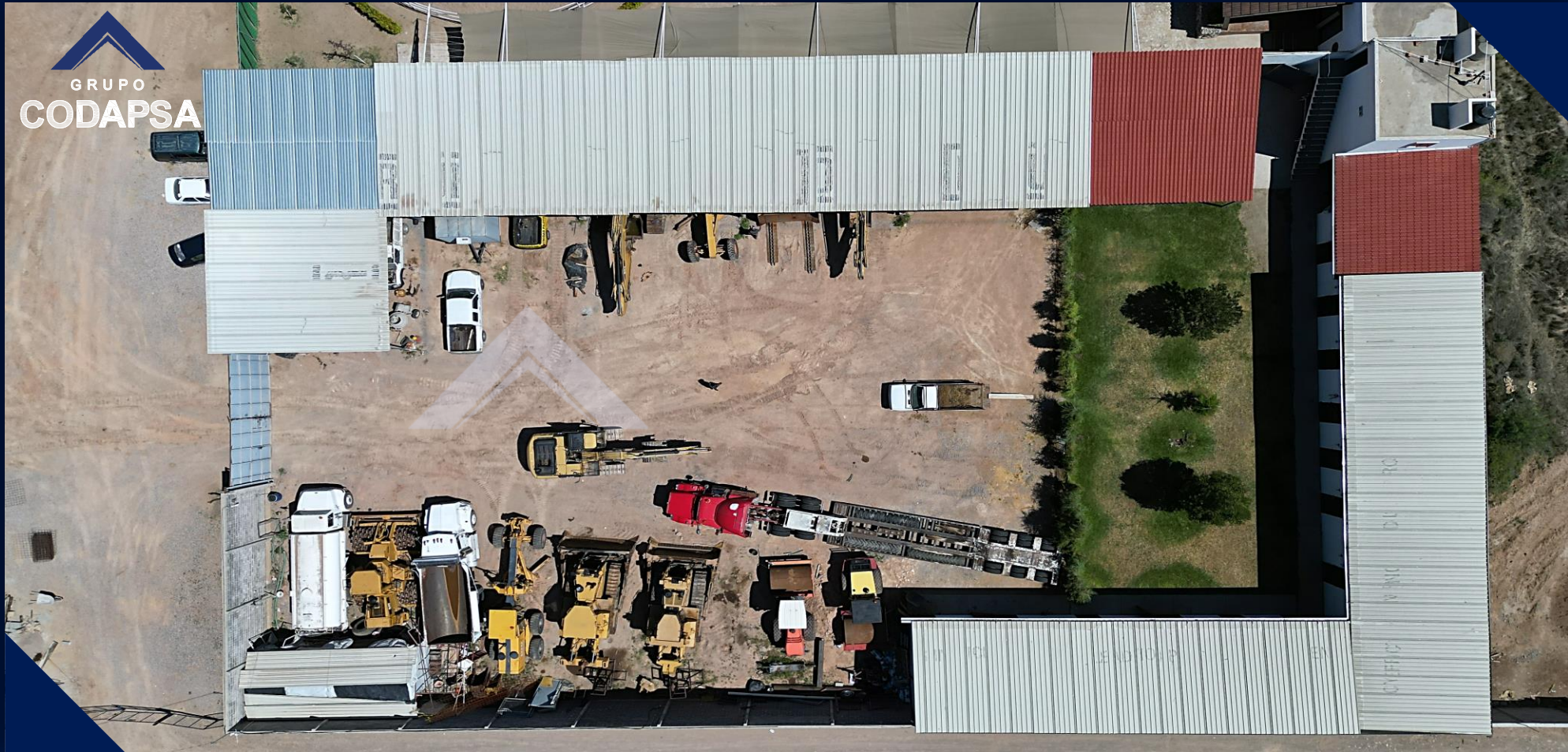


- Land Movement Contracts
- Metallic Structures
- Reinforced concrete and masonry
- Lateral coverings of walls and roofs
- facilities engineering

Facilities engineering according to the type of specialty:

- ✓ Lighting systems for industrial buildings.
- ✓ Extinguishing systems via sprinklers for industrial buildings.
- ✓ Boilermaking, Ducts, Pipe Spools and supports.
- ✓ High Voltage Electrical Works.
- ✓ Electromechanical Assembly Contracts.

CODAPSA HEAVY MACHINERY PARK



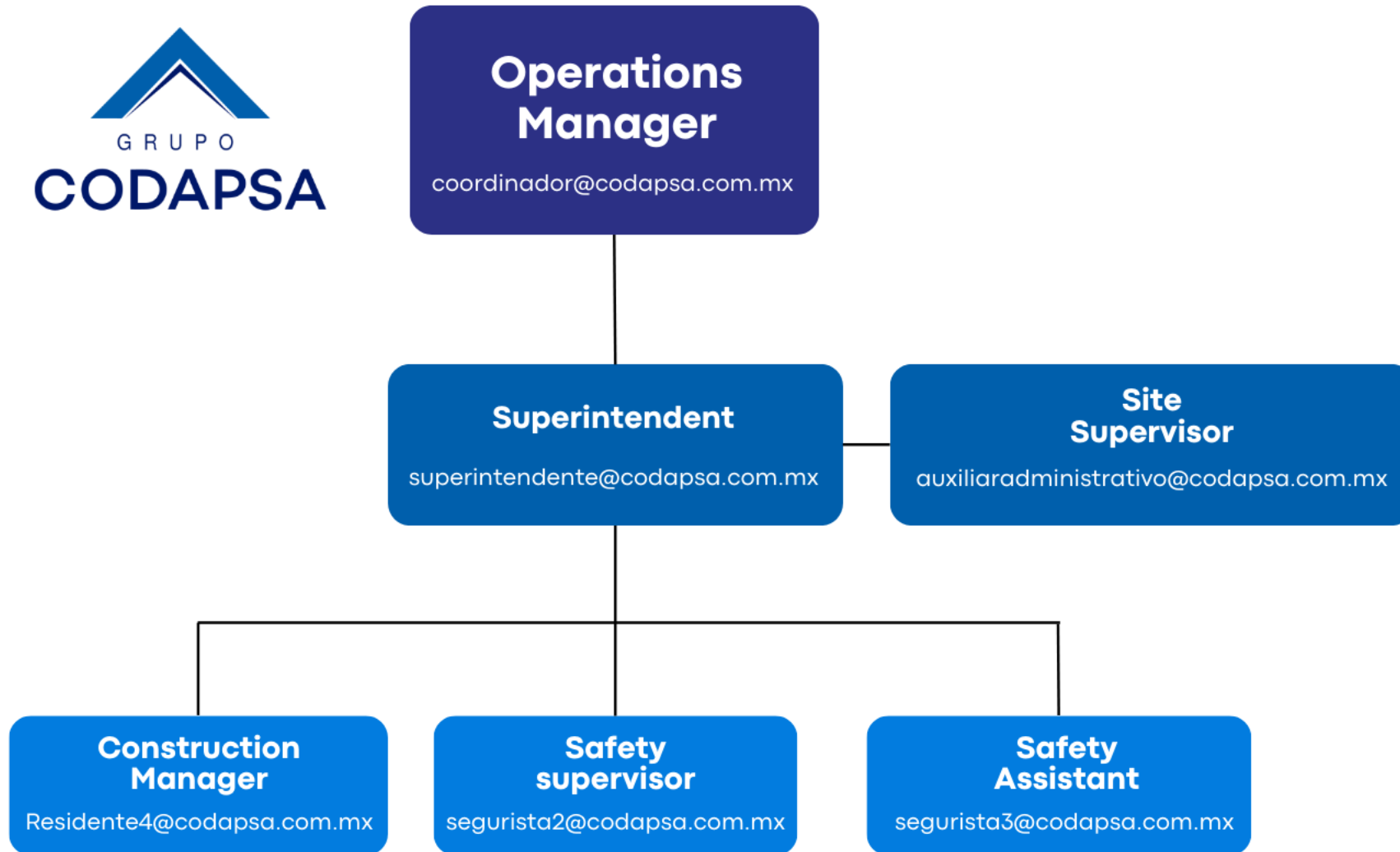
INGENIERIA Y CONSTRUCCION CODAP, S.A. de C.V. • LARGE STOCK OF HEAVY MACHINERY • WE HAVE TURNKEY SERVICE. • THE EQUIPMENT HAS CIVIL LIABILITY COVERAGE INSURANCE. • ALL OUR EQUIPMENT AND OPERATORS ARE CERTIFIED AND TRAINED IN INDUSTRIAL SAFETY AND ENVIRONMENTAL CONTROL. • WE HAVE AN ORCHESTRA UNIT FOR EQUIPMENT MAINTENANCE, THIS UNIT IS CERTIFIED AND VALIDATED FOR ENVIRONMENTAL CONTROL, SAFETY AND HYGIENE.





Photograph of the CODAPSA machinery park.

ORGANIZATION CHART ON SITE





✓ **Earth movement and rental of heavy machinery.**

(Cleaning of land, bases and sub-bases, Embankments, Platforms, Quality Laboratories, Haulage, motor graders, vibro compactors, excavators, backhoe loaders, pipes and dump trucks.)

✓ **Foundations, exterior works and civil works.**

(Special and deep foundations, interior and exterior civil works, electrical and plumbing installation, telephone and fire-fighting systems, signaling and accessibility, pavements and walls in general, bridges and highways).

✓ **Industrial structures and industrial buildings.**

(Reinforced concrete, concrete plates, design, manufacture and assembly of metal structures, trusses, rigid frames, base plates and laminate).

✓ **Civil and industrial architectural complexes.**

(industrial parks, industrial buildings, shopping malls, vertical buildings, hospitals and hotels).

✓ **Maintenance and Integral Solutions.**

(Electromechanical installations, Hydraulic and sanitary installations, Water treatment and purification plants, Conservation, Design and manufacturing, Industrial cleaning).



In addition, we are construction developers, investors and administrators of large scale and value projects.



**LAGUN PARK
LAGUNA DE SAN VICENTE, VILLA DE REYES, SAN LUIS POTOSÍ.**





EARTH MOVEMENT AND HEAVY MACHINERY RENTAL



FOUNDATIONS, EXTERNAL WORKS AND CIVIL WORKS



GRU
CODA

STRUCTURES AND INDUSTRIAL BUILDINGS

PO
APSA



ARCHITECTURAL, CIVIL AND INDUSTRIAL COMPLEXES



GENERAL MAINTENANCE AND INDUSTRIAL SOLUTIONS.

INDUSTRIAL WAREHOUSE – COMPLETE WORK

2 staff training rooms, kitchen area, 2 full bathrooms, garage and warehouse esplanade that includes a ramp with a platform for loading and unloading heavy material with a forklift.



TOTAL SURFACE OR VOLUME: 750 m2

EXECUTION TIME: 8 MONTHS

AMOUNT: \$17,247,715.58 MXN



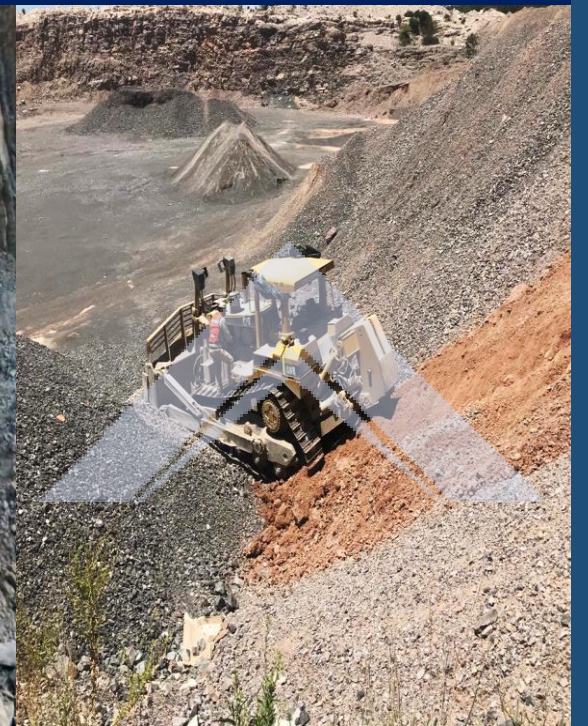
RENT OF MACHINERY AND GRAVEL EXPLOITATION



Rental of heavy machinery for the maintenance of the Matehuala, Saltillo road section in the state of Nuevo León. Gravel exploitation.

EXECUTION TIME: 18 MONTHS

AMOUNT: \$37,589,046 MXN



MAGNA BAY EXPANSION EARTHWORKS

Plant MAGNA C BAY San Luis Potosí, GP CONSTRUCTION, Cutting and stripping of natural terrain, Rainwater channel, Dirt roads and Paving in the maneuvering yard and parking.



EXECUTION TIME: 6 MONTHS

AMOUNT: \$12,900,000.00 MXN



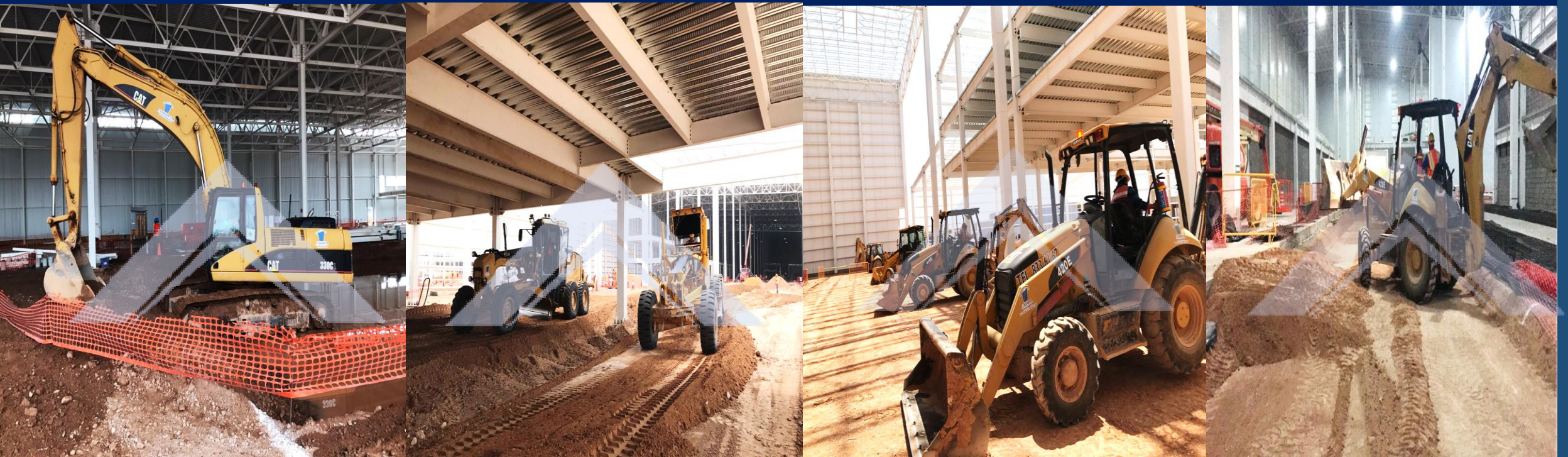


EARTH MOVEMENTS IN CHILLERS AREA

Terracing and Paving of patios of Maneuvers Yard, Warehouse, Various maintenance service in the area of offices and inside the Paint Shop building, Parking for temporary offices and maintenance of temporary offices inside the plant.

EXECUTION TIME: 2 MONTHS

AMOUNT: \$2,842,000.00 MXN



FOUNDATIONS OF FRANKEE EL DORADO WORK



EXECUTION TIME: 2 MONTHS

AMOUNT: \$1,086,475.00 MXN





TAXAN WORK FOUNDATIONS

EXECUTION TIME: 3 MONTHS

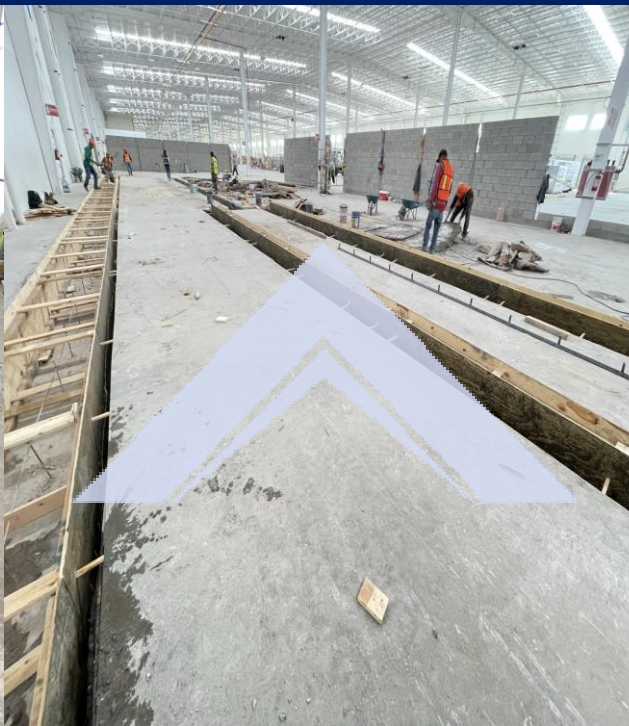
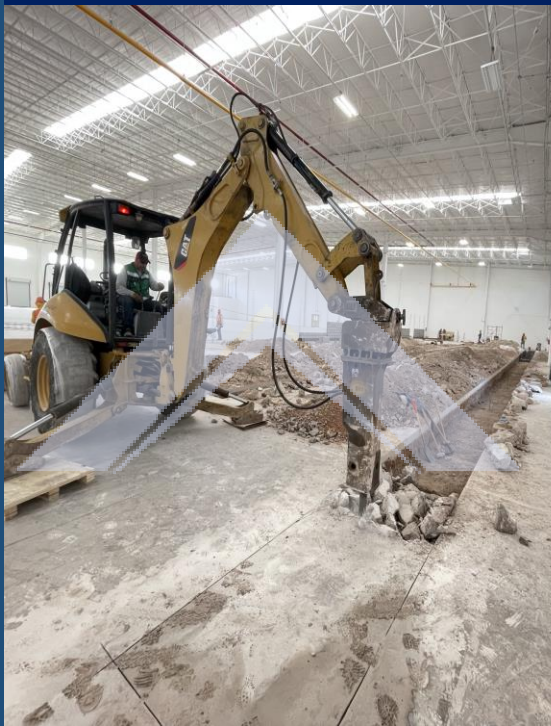
AMOUNT: \$2,887,985.57MXN



CIVIL WORKS (TRENCHES)

EXECUTION TIME: 4 MONTHS

AMOUNT: \$12,600,000 MXN





CIVIL WORKS (METAL STRUCTURE)

EXECUTION TIME: 4 MONTHS

AMOUNT: \$12,600,000 MXN



CIVIL WORKS (EPOXY FLOORS)

EXECUTION TIME: 4 MONTHS

AMOUNT: \$12,600,000 MXN

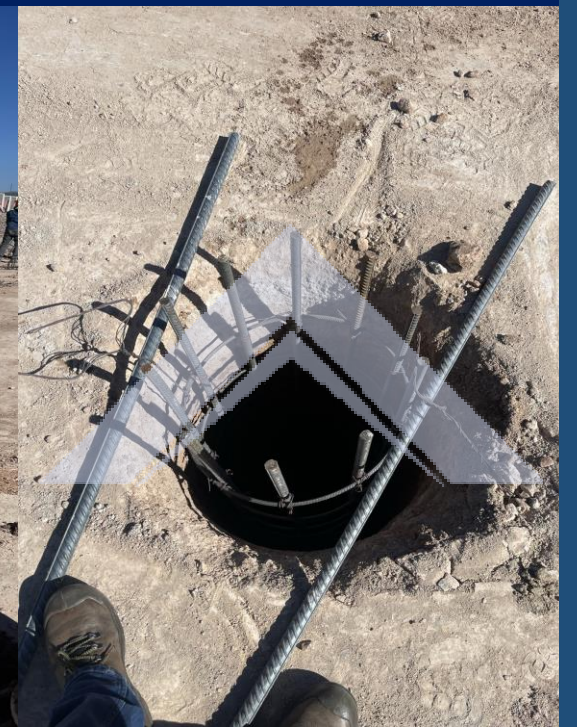




CIVIL WORKS (PILES)

EXECUTION TIME: 4 MONTHS

AMOUNT: \$12,600,000 MXN



MODERNIZATION AND WIDENING OF ROAD KM 20+920 TO KM 43+00

EXECUTION TIME: 8 MONTHS

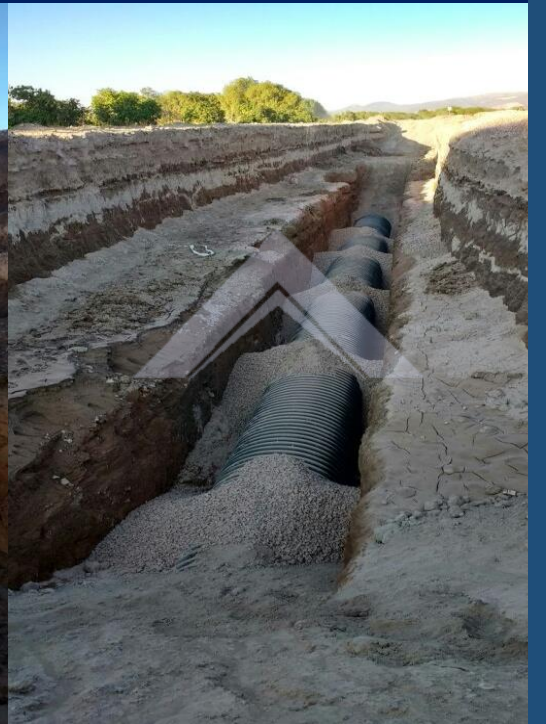
AMOUNT: \$17,247,715.58 MXN





EARTH MOVEMENTS IN THE SPRINKLERS AREA

EXECUTION TIME: 8 MONTHS
AMOUNT: \$2,842,000.00 MXN



REHABILITATION OF HOUSES AND APARTMENTS, CONSTRUCTION STRUCTURAL STEEL WORKSHOP

EXECUTION TIME: 3 MONTHS

AMOUNT: \$3,760,377.80 MXN





PASTED CONCRETE

EXECUTION TIME: 1 YEAR

AMOUNT: \$17247715.58 MXN



RECONSTRUCTION OF DITCHES LIBRAMIENTO ORIENTE SAN LUIS POTOSI

EXECUTION TIME: 6 MONTHS
AMOUNT: \$6,728,000.00 MXN



EARTH MOVING IN ZOPPAS INDUSTRIES ACCESS



HOTEL JM – COMPLETE PROJECT EARTH MOVEMENT, CIVIL WORKS, STRUCTURE AND FINISHES

TOTAL AREA OR VOLUME: 5,523 m2

EXECUTION TIME: 3 MONTHS

AMOUNT: \$100,000,000.00 MXN





GRUPO
CODAPSA
www.codapsa.com

“LET'S MAKE A TEAM. THE POWER OF SYNERGY”.

Contact us:

COMERCIAL AREA

areacomercial@codapsa.com.mx
444 207 5367

COSTS AND BUDGETS

analistaspresupuestos@codapsa.com.mx
444 203 7562

OPERATIONS

gerenteoperaciones@codapsa.com.mx
444 223 9140

Alaquines 129-Interior 1, Colonia:
Bellas Lomas, 78210 San Luis,
S.L.P.

Office phone: 444 833 6167

- ✓ The form of payment can be by transfer or check. Prices plus IVA
- ✓ We always require a down payment to start work, in general it is between 25% and 30%.
- ✓ We comply with issues of: advance payment bonds, compliance, guarantee and hidden defects; This will be processed according to the contract, once the amount has been specified.